

iPad Pro 11 (2021) Bluetooth Keyboard Case



Specifications:

- Bluetooth version: v5.1
- Effective distance: 10 meters
- Battery capacity: 280mAh

- Charging time: 2 hours
- Working time: 93 hours
- Standby time: 100 days
- Lithium battery life: 3 years

Connecting with your device

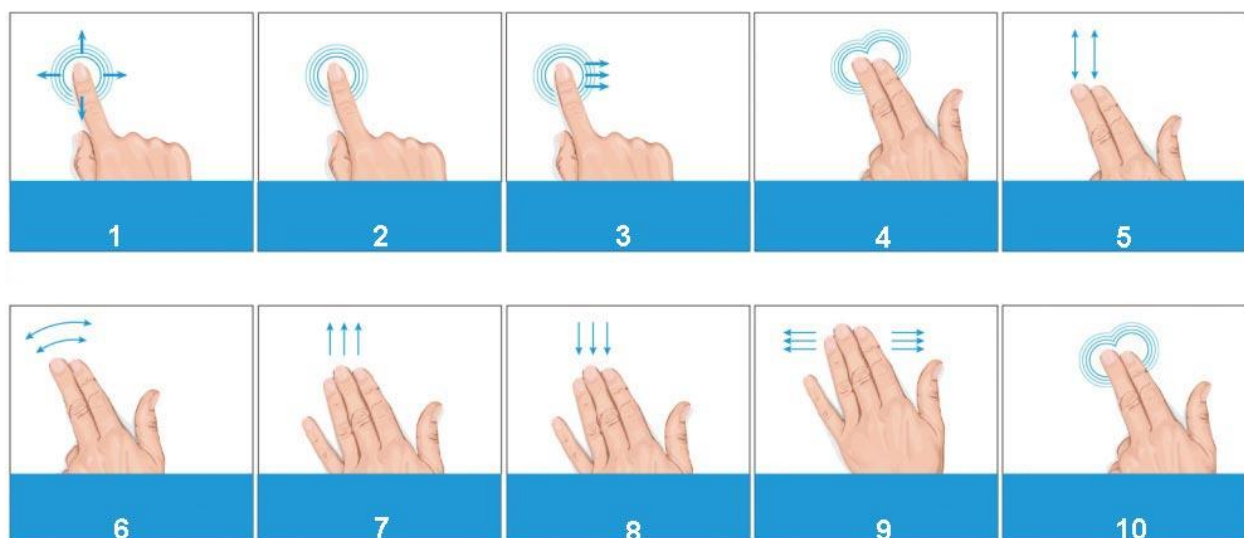
1. On/Off button: Slide to power the keyboard on or off
2. Press the Fn+C to activate pairing mode, the indicator will blink
3. Open the Bluetooth search on your device and click on the "Bluetooth Keyboard"
4. After the pairing is successful, the indicator lights turn off
5. If there is no operation in 15 minutes, the keyboard will go to sleep mode, press and hold 5s any key to activate it

Commands

1. Fn + C - Bluetooth pairing
2. Fn + E - switch to iOS
3. Fn + touchpad - turn on/off the touchpad

Note for touchpad function: Make sure your iPad iOS system is 13.0 or above, then turn on the touch function of the iPad (Settings-Accessibility-Touch-Assistive Touch-Open).

Instructions about touchpad gestures



1. Slide your finger to move the cursor
2. Single finger tap - replace left mouse button

3. Single finger fast double click without loose drag - left click to select the target drag
4. Fingers tapping - replace right mouse button
5. Swipe up or down with 2 fingers - replace wheel scrolling
6. Swipe left or right with 2 fingers to display previous or next page
7. Move 3 fingers up at the same time - switching the recent task
8. Move 3 fingers down at the same time - returning to the main interface
9. Fingers sliding left and right at the same time - sliding left and right in the active window
10. Fingers zoom - effective in the webpage, not in the picture